



## HOUSE & LAND

### SIENNA RISE PLUMPTON

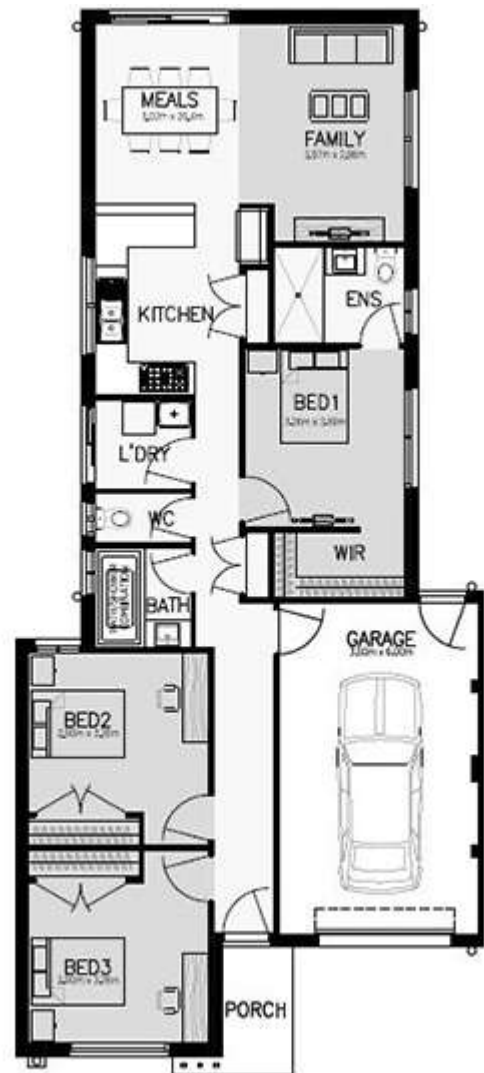
**\$428,100**

**House name:** AVILA  
**Lot Number:** 311 Pienza Drive  
**Lot Size:** 238

3 2 1

House and Land Package includes:

- Carpets and tiles throughout
- 2590mm high ceilings
- 900mm European BLANCO appliances
- Dishwasher
- Panel Lift COLORBOND Garage door with 3 remotes
- Letterbox and clothesline
- Front and rear landscaping including coloured driveway
- Blinds and flyscreens to all windows
- Clothesline and letterbox
- Fixed site costs
- Plus much more



**CALL OR EMAIL [admin@admin.com](mailto:admin@admin.com)**

**YOU'LL BE SURPRISED BY WHAT WE CALL STANDARD**

The information contained in this flyer is to be used as a guide only. The flyer was completed prior to the engineering and construction of the particular home therefore design, engineering, dimensions, fittings and specifications are subject to change and will be specified in the final purchase and/or construction contract. The flyer includes features not supplied by Nostra Homes including without limitation landscaping, concrete driveways, fencing, water features and furniture. This flyer does not constitute part of an offer or contract. Prospective purchasers should rely on their own enquiries, legal advice and the contract of sale. Please contact our office if you have any questions regarding the property.